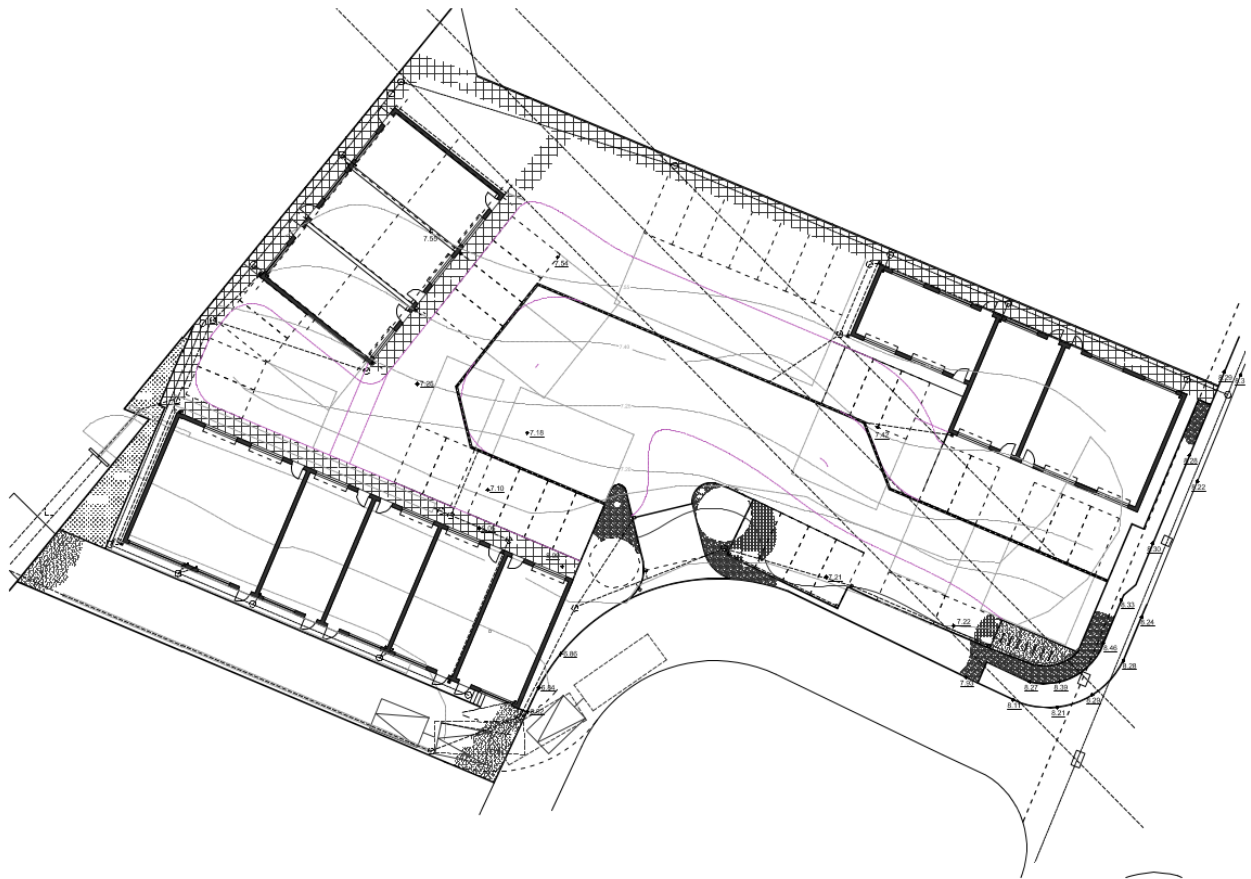
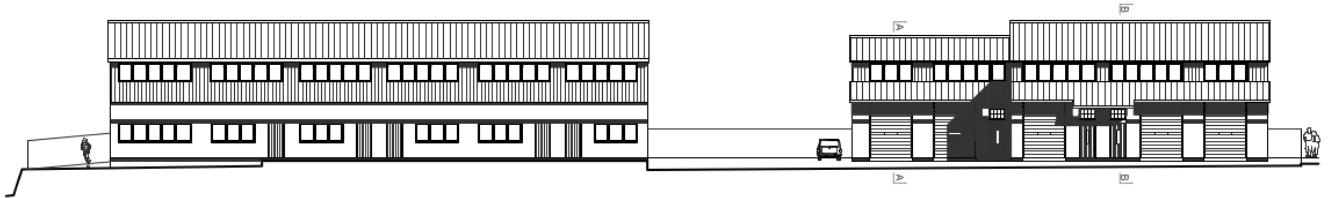


## Eleven new industrial units Moorlands Enterprise Park, Glastonbury

The client wanted to build units 'he could be proud of'. There were many design challenges here to do with services and topography. We have managed to create a sense of place in this interesting location where the Victorian industrial site meets open countryside. The client will locate his own business here and has had a great deal of interest from other businesses.



Completion Spring 2016



**HERIZ·PAYNE**  
ARCHITECTS, SURVEYORS & PLANNERS

33a High St., Glastonbury  
Tel. 01458 835865  
[info@herizpayne.com](mailto:info@herizpayne.com)  
Directors:  
Johnny Heriz-Smith RIBA