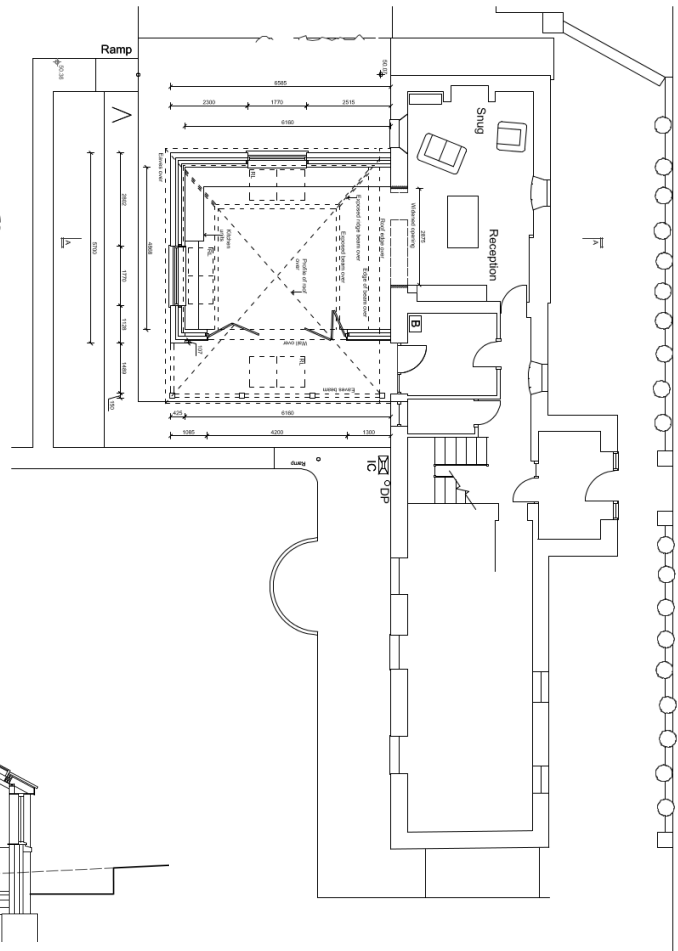
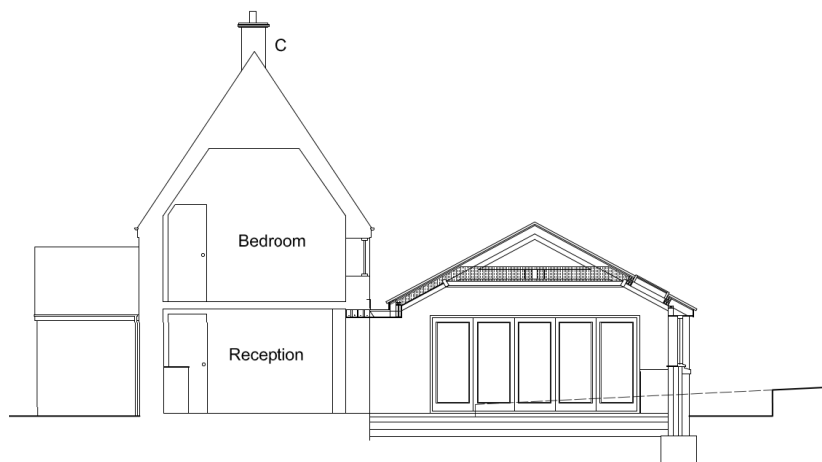


Japanese/Traditional fusion Extension, Compton Dundon

The brief was to extend a long thin Somerset house with a light and airy kitchen dining room. The clients were a couple, one of whom was Japanese. She wanted to have a couple of Traditional Japanese features incorporated in the design including a covered walkway or 'engawa'. The extension is also designed as a formal foil to the main house.



HERIZ•PAYNE

ARCHITECTS, SURVEYORS & PLANNERS

33a High St., Glastonbury
Tel. 01458 835865
info@herizpayne.com
Directors:
Johnny Heriz-Smith RIBA
Liz Payne MA MRTPI